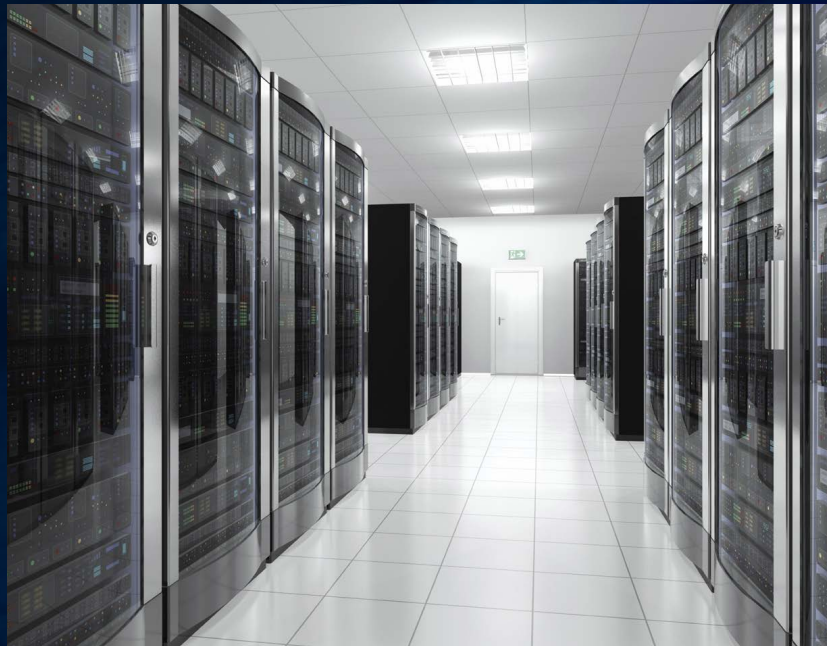




Fiber Cabling Services

FABRICATION & DISTRIBUTION

CUIVRE | OPTIQUE | VDI | RESEAU



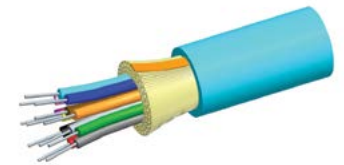
NETCONNECT[®]
Preferred ordering guide EMEA Region

COMMSCOPE[®]

Contents

Fiber Solutions	3
Fiber optic cable	3
- Indoor/outdoor cables	3
- Outside plant cables	4
G2 Family	5
AGL, HD and UD panels	6
G2 Adapter packs	7
G2 pigtail cassettes	7
Method A Specific adapter packs and G2 modules	8
Method B Specific adapter packs and G2 modules	9
G2 wall boxes and G2 accessories	10
Fiber connectivity	11
Fiber patch cords	12
Pigtails for adapter packs	13
Method A preterminated trunk cables.....	14
Method A array cables.....	16
Method B preterminated trunk cables.....	18
Method B Ruggedized fanout cables.....	18
Method B Array cords.....	19
Copper Solutions	20
Category 6A products	20
Category 6A and Category 7 shielded copper cables.....	20
Category 6A modular shielded panels.....	20
Category 6A shielded jacks	20
Modular jack termination tool	21
Category 6A F/UTP copper patch cords	21
Category 6A modular unshielded panels.....	21
Category 6A UTP jacks – SL opening	21
Category 6 products	22
Category 6 UTP copper cables.....	22
Category 6 UTP copper panels.....	22
Category 6 UTP jacks – SL opening	22
Category 6 U/UTP patch cords - LSZH.....	22
Miscellaneous	23
Horizontal Cable Management	23
Surface mount boxes	23

The CommScope NETCONNECT ordering guide for the Middle East and Africa region contains commonly ordered copper and fiber structured cabling products. This information is subject to change. For a comprehensive, up-to-date listing of CommScope products, please go to www.commscope.com.



Material ID	Product Number	Description	# of Fibers	CRP Rating
Fiber optic cables				
8-1592141-9	POC-P5ROD06N006DGY09NUTQ	Indoor/outdoor Fiber Optic Cable, 6-fiber, office distribution, multimode, OM3, ULSZH, aqua	6	Cca
8-1592145-9	POC-P5IOD12N012HGY09DUTQ	Indoor/outdoor Fiber Optic Cable, 12-fiber, office distribution, multimode, OM3, ULSZH, aqua	12	Cca
8-1594455-9	POC-P5IOD24N024HGY09DUTQ	Indoor/outdoor Fiber Optic Cable, 24-fiber, office distribution, multimode, OM3, ULSZH, aqua	24	Cca
9-1592141-9	POC-P5SOD06N006DGY09NUTQ	Indoor/outdoor Fiber Optic Cable, 6-fiber, office distribution, multimode, OM4, ULSZH, aqua	6	Cca
9-1592145-9	POC-P5SOD12N012HGY09NUTQ	Indoor/outdoor Fiber Optic Cable, 12-fiber, office distribution, multimode, OM4, ULSZH, aqua	12	Cca
9-1594455-9	POC-P5SOD24N024DGY09NUTQ	Indoor/outdoor Fiber Optic Cable, 24-fiber, office distribution, multimode, OM4, ULSZH, aqua	24	Cca
1594770-6	POC-P09OD06N006DGY09NUYL	Indoor/outdoor Fiber Optic Cable, 6-fiber, office distribution, singlemode, ULSZH, yellow	6	Cca
1594680-6	POC-P09OD12N012DGY09NUYL	Indoor/outdoor Fiber Optic Cable, 12-fiber, office distribution, singlemode, ULSZH, yellow	12	Cca
1594559-6	POC-P09OD24N024DGY09NUYL	Indoor/outdoor Fiber Optic Cable, 24-fiber, office distribution, singlemode, ULSZH, yellow	24	Cca
2-599615-3	POC-FO-CAB-RRDLT-6X3-2KM	Fiber Optic Cable, 6-fiber, OM3, 2000 m, aqua	6	Dca
2-599617-3	POC-FOCAB-RRDLT-12X3-2KM	Fiber Optic Cable, 12-fiber, OM3, 2000 m, aqua	12	Dca
2-1716001-3	POC-FOC-RRGLT-UT-24X3-2KM	Fiber Optic Cable, 24-fiber, OM3, ULSZH, aqua	24	Eca
2-599621-3	POC-FOCAB-RRDLT-48X3-2KM	Fiber Optic Cable, 48-fiber, OM3, 2000 m, aqua	48	Eca
2-599617-2	POC-FO-CAB-RRDLT-12X2-2KM	Fiber Optic Cable, 12-fiber, OM4, 2000 m, aqua	12	Dca
2-1716001-2	POC-FOC-RRGLT-UT-24X2-2KM	Fiber Optic Cable, 24-fiber, OM4, ULSZH, aqua	24	Eca
2-599615-4	POC-FO-CAB-RRDLT-6X4-2KM	Fiber Optic Cable, 6-fiber, OS2, 2000 m, yellow	6	Dca
2-599617-4	POC-FOCAB-RRDLT-12X4-2KM	Fiber Optic Cable, 12-fiber, OS2, 2000 m, yellow	12	Dca
2-1716001-4	POC-FOC-RRGLT-UT-24X4-2KM	Fiber Optic Cable, 24-fiber, OS2, ULSZH, aqua	24	Eca
2-599621-4	POC-FOCAB-RRDLT-48X4-2KM	Fiber Optic Cable, 48-fiber, OS2, ULSZH, yellow	48	Eca
760243281	C-006-LA-5L-M06BK/20G/B	Indoor/Outdoor, Single Jacket/Single Armor, Low Smoke Zero Halogen (LSZH), Gel-Filled, Stranded Loose Tube Cable	6	B2ca
760243286	C-012-LA-5L-M12BK/20G/B	Indoor/Outdoor, Single Jacket/Single Armor, Low Smoke Zero Halogen (LSZH), Gel-Filled, Stranded Loose Tube Cable	12	B2ca
760243288	C-024-LA-5L-M12BK/20G/C	Indoor/Outdoor, Single Jacket/Single Armor, Low Smoke Zero Halogen (LSZH), Gel-Filled, Stranded Loose Tube Cable	24	Cca
760243292	C-048-LA-5L-M12BK/20G/C	Indoor/Outdoor, Single Jacket/Single Armor, Low Smoke Zero Halogen (LSZH), Gel-Filled, Stranded Loose Tube Cable	48	Cca
760243280	C-006-LA-5K-M06BK/20G/B	Indoor/Outdoor, Single Jacket/Single Armor, Low Smoke Zero Halogen (LSZH), Gel-Filled, Stranded Loose Tube Cable	6	B2ca
760243285	C-012-LA-5K-M12BK/20G/B	Indoor/Outdoor, Single Jacket/Single Armor, Low Smoke Zero Halogen (LSZH), Gel-Filled, Stranded Loose Tube Cable	12	B2ca
760243287	C-024-LA-5K-M12BK/20G/C	Indoor/Outdoor, Single Jacket/Single Armor, Low Smoke Zero Halogen (LSZH), Gel-Filled, Stranded Loose Tube Cable	24	Cca
760243291	C-048-LA-5K-M12BK/20G/C	Indoor/Outdoor, Single Jacket/Single Armor, Low Smoke Zero Halogen (LSZH), Gel-Filled, Stranded Loose Tube Cable	48	Cca
760241034	C-006-LA-8W-M06BK/20G/B	Indoor/Outdoor, Single Jacket/Single Armor, Low Smoke Zero Halogen (LSZH), Gel-Filled, Stranded Loose Tube Cable	6	B2ca
760241035	C-012-LA-8W-M06BK/20G/B	Indoor/Outdoor, Single Jacket/Single Armor, Low Smoke Zero Halogen (LSZH), Gel-Filled, Stranded Loose Tube Cable	12	B2ca
760241036	C-024-LA-8W-M12BK/20G/C	Indoor/Outdoor, Single Jacket/Single Armor, Low Smoke Zero Halogen (LSZH), Gel-Filled, Stranded Loose Tube Cable	24	Cca
760241037	C-048-LA-8W-M12BK/20G/C	Indoor/Outdoor, Single Jacket/Single Armor, Low Smoke Zero Halogen (LSZH), Gel-Filled, Stranded Loose Tube Cable	48	Cca



Material ID	Description	Environment	Fiber Type	Fiber Count
Fiber optic cables				
2-599682-4	External loose tube cable with corrugated steel armour - rodent resistant	Outdoor	OS2	6F
2-599692-4	External loose tube cable with corrugated steel armour - rodent resistant	Outdoor	OS2	8F
2-599683-4	External loose tube cable with corrugated steel armour - rodent resistant	Outdoor	OS2	12F
2-599690-4	External loose tube cable with corrugated steel armour - rodent resistant	Outdoor	OS2	24F
2-599682-3	External loose tube cable with corrugated steel armour - rodent resistant	Outdoor	OS3	6F
2-599692-3	External loose tube cable with corrugated steel armour - rodent resistant	Outdoor	OS3	8F
2-599683-3	External loose tube cable with corrugated steel armour - rodent resistant	Outdoor	OS3	12F
2-599690-3	External loose tube cable with corrugated steel armour - rodent resistant	Outdoor	OS3	24F
2-599142-4	Twin zip cable	24	OS2	2F
2-599142-3	Twin zip cable	6	OS3	2F

G2 Family

The G2 family of panels and modules is a versatile solution that is available in configurations for any application. No matter what polarity, fiber count or performance needed; the G2 family has a solution. Our G2 family modules fit into any AGL, HD or UD panels offering density up to 48f duplex LC or 32f MPO adding flexibility to any configuration.

The following high-level overview provides details of the AGL, HD and UD panels and associated modules and components.

G2 PANELS				
Series	Density	Concept	Material ID	Description
AGL - AGILE Simple & Cost Effective	96 LC/RU 32 MPO/RU	Open Rear Fixed	760241517	AGL-1U-FX
			760241518	AGL-1U-ANG-FX
		Open Rear Sliding	760242453	AGL-1U-SL
			760242454	AGL-1U-ANG-SL
		Basic 2-Piece Drawer	760242455	AGL-1U-DRW-SL
		Basic Enclosed Fixed	760242475	AGL-1U-ENC-FX
Basic Enclosed Sliding	760242476	AGL-1U-ENC-SL		
HD - High Density Premium Features	96 LC/RU 32 MPO/RU	Standard Fixed	760210732	HD-1U-FX
			760210740	HD-2U-FX
			760210757	HD-4U-FX
		Standard Sliding	760209940	HD-1U
			760209957	HD-2U
			760209965	HD-4U
		Standard w/Splicing	760231506	HD-1U-SP
			760231514	HD-2U-SP
			760231522	HD-4U-SP
UD - Ultra Density Premium Features	144 LC/RU 48 MPO/RU	Premium Sliding	760227306	UD-2U
			760227314	UD-4U

AGL, HD and UD Panels

The AGL, HD and UD fiber panels support the G2 style module and adapter panels, which are backwards compatible with previous hardware such as the InstaPATCH360 and 360G2 fiber panels.

The AGL panel is a low cost solution for usable density in a 1U format.

The HD (High Density) panel is available in 1U, 2U and 4U sizes, and supports high density applications in data centers and buildings.

The UD (Ultra Density) panel is designed for even higher density applications and is available in 2U and 4U sizes.



AGL-1U-FX



AGL-1U-DRW



AGL-1U-ENC-FX



HD-1U



HD-2U



HD-4U



UD-2U



UD-4U

G2 Adapter Packs



360DPis-24LC-LS

G2 ADAPTER PACKS				
	12 Fiber		24 Fiber	
	Material ID	Description	Material ID	Description
LC Multimode (OM3-OM4)	760230938	360DPis-12LC-LS	760216754	360DPis-24LC-LS
LC Multimode (OM5)	760236043	360DPis-12LC-WB	760236041	360DPis-24LC-WB
LC Singlemode	760230946	360DPis-12LC-SM	760216762	360DPis-24LC-SM
LC Singlemode APC	760230961	360DPis-12LCA-SM	760216770	360DPis-24LCA-SM
SC Multimode (OM3-OM4)	760134551	360DP-12SC-LS	X	X
SC Singlemode	760135087	360DP-12SC-SM	X	X
SC Singlemode APC	760135095	360DP-12SCA-SM	X	X

G2 Pigtail Cassettes



360G2 Cartridge 12-LC-LS-AQ



360G2 Cartridge 12-LCA-SM-GR



360G2 Cartridge 12-LC-SM-BL

G2 PIGTAIL CASSETTES				
	No Pigtails		Pigtails Included	
	Material ID	Description	Material ID	Description
LC Multimode (OM3-OM4)	760109256	360G2 Cartridge 12-LC-LS-AQ	760109470	360G2 Cartridge 12-LC-LS-AQ-Pigtails
LC Singlemode UPC	760109272	360G2 Cartridge 12-LC-SM-BL	760109496	360G2 Cartridge 12-LC-SM-BL-Pigtails
LC Singlemode APC	760109280	360G2 Cartridge 12-LCA-SM-GR	760109504	360G2 Cartridge 12-LCA-SM-GR-Pigtails
SC Multimode (OM3-OM4)	760109298	360G2 Cartridge 6-SC-LS-AQ	760109512	360G2 Cartridge 6-SC-LS-AQ-Pigtails A
	X	X	760109520	360G2 Cartridge 6-SC-LS-AQ-Pigtails B
SC Singlemode UPC	760109314	360G2 Cartridge 6-SC-SM-BL	760109553	360G2 Cartridge 6-SC-SM-BL-Pigtails A
	X	X	760109561	360G2 Cartridge 6-SC-SM-BL-Pigtails B
SC Singlemode APC	760109322	360G2 Cartridge 6-SCA-SM-GR	760109579	360G2 Cartridge 6-SCA-SM-GR-Pigtails A
	X	X	760109587	360G2 Cartridge 6-SCA-SM-GR-Pigtails B

Method A Specific Adapter Packs



360DP-6MPO-A



360DP-8MPO-A

G2 MPO ADAPTER PACKS METHOD A			
	Material ID		Description
2 MPO	760243438		360DP-2MPO-A
4 MPO	760243439		360DP-4MPO-A
6 MPO	760242723		360DP-6MPO-A
8 MPO	760242724		360DP-8MPO-A

Method A G2 Modules

G2 modules are available in MPOptimate – Method A polarity. G2 modules fit into the following panels: AGL, HD and UD.



DM12-24LC-LS-A

MPOptimate MODULES METHOD A								
	MPO12 - 12 Fiber - Straight		MPO 12 - 12 Fiber - Pair Flipped		MPO 12 - 24 Fiber - Straight		MPO 12 - 24 Fiber - Pair Flipped	
	Material ID	Description	Material ID	Description	Material ID	Description	Material ID	Description
LC Multimode (OM3-OM4)	760242493	DM12-12LC-LS-A	760242494	DM12-12LC-LS-AF	760242495	DM12-24LC-LS-A	760242496	DM12-24LC-LS-AF
LC Singlemode (OS2)	760242498	DM12-12LC-SM-A	760242499	DM12-12LC-SM-AF	760242500	DM12-24LC-SM-A	760242501	DM12-24LC-SM-AF

MPOptimate MODULES METHOD A				
	MPO 24 - 24 Fiber - Straight		MPO 24 - 24 Fiber - Pair Flipped	
	Material ID	Description	Material ID	Description
LC Multimode (OM3-OM4)	760242497	DM24-24LC-LS-A	760242502	DM24-24LC-LS-AF

Method B Specific Adapter Packs



360DP-2MPO



360DP-4MPO

G2 MPO ADAPTER PACKS METHOD B				
		Material ID		Description
2 MPO		760107490		360DP-2MPO
4 MPO		760107508		360DP-4MPO
6 MPO		760107516		360DP-6MPO-BK
8 MPO		760107524		360DP-8MPO

Method B G2 Modules



360DMis-12LC-LS



360DMis-12LC-SM



360DMis-12LCA-SM



360DMis-24LC-LS

G2 MODULES - LOW LOSS SOLUTIONS METHOD B				
	MPO12 - 12 Fiber		MPO12 - 24 Fiber	
	Material ID	Description	Material ID	Description
LC Multimode (OM3-OM4)	760224071	360DMis-12LC-LS	760206532	360DMis-24LC-LS
LC Multimode (OM5)	760224113	360DMis-12LC-LS-WB	760217950	360DMis-24LC-WB
LC Singlemode UPC	760224089	360DMis-12LC-SM	760206540	360DMis-24LC-SM
LC Singlemode APC	760224238	360DMis-12LCA-SM	760206565	360DMis-24LCA-SM
SC Multimode (OM3-OM4)	760109967	360DM-12SC-LS	X	X
SC Singlemode UPC	760109975	360DM-12SC-SM	X	X
SC Singlemode APC	760109991	360DM-12SCA-SM	X	X

G2 Wall Boxes and G2 Accessories

Wall Mount Building Enclosures provide fiber distribution management when space is at a premium. The WBE-MOD's are compatible will all G2 modules and adapter packs.



WBE-EMT-BK-4P-MOD

G2 WALLBOXES			
Density	Material ID	Description	
48 LC	760164616	WBE-EMT-BK-2P-MOD	
96 LC	760060426	WBE-EMT-BK-4P-MOD	
192 LC	760164624	WBE-EMT-BK-8P-MOD	



AGL-SPLICE-48



360 LP-STACK-SPT



AGL-1U-TROUGH

G2 ACCESSORIES		
Material ID	Product Code	Description
AGILE Panel Accessories		
760241378	AGL-SPLICE-48	AGILE Splice Tray Kit
760193938	AGL-1U-TROUGH	AGILE panel 1U Jumper Management Trough
Panel Accessories		
760039867	RS-2AF-16SF	RoloSplice Kit with 2 fusion splice trays for 1U and 2U rack mount, 2 and 4 port wall mount
760031856	RS-4AF-16SF	RoloSplice Kit with 4 fusion splice trays for 1U and 2U rack mount, 2 and 4 port wall mount
760031054	SW-6AF-16SF	Fusion Splice Wallet Kit with 6 splice trays for 4U rack mount and 8 port wall mount.
760148502	360-LP-STACK-SPT	Fusion Splice Tray Kit, stackable, large format for 1U and 2U rack mount
Miscellaneous		
760207944	HD-1U-REAR-EXT	1U Rear cable extension
760239082	SD-HD-UD-UDS2U-DOOR-LOCK-KT	Door lock kit for SD, HD, UD and UDS2U panels, including one (1) lock and one (1) key
760209619	CABLE-MOUNT-KIT-12	Cable attachment molding x 12
760058677	RMB-6-1/2	InstaPATCH Plus attachment bracket, rack mounted, six 1/2" fittings
760058685	RMB-6-3/8	InstaPATCH Plus attachment bracket, rack mounted, six 3/8" fittings
760109462	360G2-MOD-BLANK-4PK	Mod Panel Blank Adapter Pack, 4 Panels
760039875	G2-SRF	Small Diameter Cable Entrance Kit
760039883	G2-23BRKT	Mounting Bracket
760185595	KIT, FIBER DRUM	Fiber Drum Kit (2 per kit)



Material ID	Description	Fiber type	Alternative
LC - LC Duplex Single Mode			
6536501-1	Fiber Optic Patch Cord, singlemode, 1.8 mm zipcord, LC/PC to LC/PC duplex tuned, 1 m	OS2	FFWLCLC42-JXM001
6536501-2	Fiber Optic Patch Cord, singlemode, 1.8 mm zipcord, LC/PC to LC/PC duplex tuned, 2 m	OS2	FFWLCLC42-JXM002
6536501-3	Fiber Optic Patch Cord, singlemode, 1.8 mm zipcord, LC/PC to LC/PC duplex tuned, 3 m	OS2	FFWLCLC42-JXM003
6536501-5	Fiber Optic Patch Cord, singlemode, 1.8 mm zipcord, LC/PC to LC/PC duplex tuned, 5 m	OS2	FFWLCLC42-JXM005
1-6536501-0	Fiber Optic Patch Cord, singlemode, 1.8 mm zipcord, LC/PC to LC/PC duplex tuned, 10 m	OS2	FFWLCLC42-JXM010
SC - SC Duplex Single Mode			
6348260-1	Fiber Optic Patch Cord, singlemode, SC/PC-SC/PC, duplex, 2.5 mm tight cable, LSZH, 1 m, yellow	OS2	FFWSCSC42-JXM001
6348260-2	Fiber Optic Patch Cord, singlemode, SC/PC-SC/PC, duplex, 2.5 mm tight cable, LSZH, 2 m, yellow	OS2	FFWSCSC42-JXM002
6348260-3	Fiber Optic Patch Cord, singlemode, SC/PC-SC/PC, duplex, 2.5 mm tight cable, LSZH, 3 m, yellow	OS2	FFWSCSC42-JXM003
6348260-5	Fiber Optic Patch Cord, singlemode, SC/PC-SC/PC, duplex, 2.5 mm tight cable, LSZH, 5 m, yellow	OS2	FFWSCSC42-JXM005
1-6348260-0	Fiber Optic Patch Cord, singlemode, SC/PC-SC/PC, duplex, 2.5 mm tight cable, LSZH, 10 m, yellow	OS2	FFWSCSC42-JXM010
LC - SC Duplex Single Mode			
6536508-1	Fiber Optic Patch Cord, singlemode, 1.8 mm zipcord, LC/PC to SC/PC duplex tuned, 1 m, yellow	OS2	FFWLCSC42-JXM001
6536508-2	Fiber Optic Patch Cord, singlemode, 1.8 mm zipcord, LC/PC to SC/PC duplex tuned, 2 m, yellow	OS2	FFWLCSC42-JXM002
6536508-3	Fiber Optic Patch Cord, singlemode, 1.8 mm zipcord, LC/PC to SC/PC duplex tuned, 3 m, yellow	OS2	FFWLCSC42-JXM003
6536508-5	Fiber Optic Patch Cord, singlemode, 1.8 mm zipcord, LC/PC to SC/PC duplex tuned, 5 m, yellow	OS2	FFWLCSC42-JXM005
1-6536508-0	Fiber Optic Patch Cord, singlemode, 1.8 mm zipcord, LC/PC to SC/PC duplex tuned, 10 m, yellow	OS2	FFWLCSC42-JXM010
LC - LC Duplex - OM3			
6536969-1	Fiber Optic Patch Cord, LC to LC, OM3, twin zip, 1 m, aqua	OM3	FFZLCLC42-MXM001
6536969-2	Fiber Optic Patch Cord, LC to LC, OM3, twin zip, 2 m, aqua	OM3	FFZLCLC42-MXM002
6536969-3	Fiber Optic Patch Cord, LC to LC, OM3, twin zip, 3 m, aqua	OM3	FFZLCLC42-MXM003
6536969-5	Fiber Optic Patch Cord, LC to LC, OM3, twin zip, 5 m, aqua	OM3	FFZLCLC42-MXM005
1-6536969-0	Fiber Optic Patch Cord, LC to LC, OM3, twin zip, 10 m, aqua	OM3	FFZLCLC42-MXM010
SC - SC Duplex - OM3			
6536464-1	Fiber Optic Patch Cord, OM3, SC to SC, duplex, 2.5 mm zipcord, 1 m	OM3	FFZSCSC42-MXM001
6536464-2	Fiber Optic Patch Cord, OM3, SC to SC, duplex, 2.5 mm zipcord, 2 m	OM3	FFZSCSC42-MXM002
6536464-3	Fiber Optic Patch Cord, OM3, SC to SC, duplex, 2.5 mm zipcord, 3 m	OM3	FFZSCSC42-MXM003
6536464-5	Fiber Optic Patch Cord, OM3, SC to SC, duplex, 2.5 mm zipcord, 5 m	OM3	FFZSCSC42-MXM005
1-6536464-0	Fiber Optic Patch Cord, OM3, SC to SC, duplex, 2.5 mm zipcord, 10 m	OM3	FFZSCSC42-MXM010
LC - SC Duplex - OM3			
6536967-1	Fiber Optic Patch Cord, LC to SC, 1.8 mm duplex, OM3, 1 m, aqua	OM3	FFZLSCC42-MXM001
6536967-2	Fiber Optic Patch Cord, LC to SC, 1.8 mm duplex, OM3, 2 m, aqua	OM3	FFZLSCC42-MXM002
6536967-3	Fiber Optic Patch Cord, LC to SC, 1.8 mm duplex, OM3, 3 m, aqua	OM3	FFZLSCC42-MXM003
6536967-5	Fiber Optic Patch Cord, LC to SC, 1.8 mm duplex, OM3, 5 m, aqua	OM3	FFZLSCC42-MXM005
1-6536967-0	Fiber Optic Patch Cord, LC to SC, 1.8 mm duplex, OM3, 10 m, aqua	OM3	FFZLSCC42-MXM010
LC - LC Duplex - OM4			
2160046-1	Fiber Optic Patch Cord, OM4, LC duplex to LC duplex, 1.8 mm LSZH, 1 m, aqua	OM4	FFXLCLC42-MXM001
2160046-2	Fiber Optic Patch Cord, OM4, LC duplex to LC duplex, 1.8 mm LSZH, 2 m, aqua	OM4	FFXLCLC42-MXM002
2160046-3	Fiber Optic Patch Cord, OM4, LC duplex to LC duplex, 1.8 mm LSZH, 3 m, aqua	OM4	FFXLCLC42-MXM003
2160046-5	Fiber Optic Patch Cord, OM4, LC duplex to LC duplex, 1.8 mm LSZH, 5 m, aqua	OM4	FFXLCLC42-MXM005
1-2160046-0	Fiber Optic Patch Cord, OM4, LC duplex to LC duplex, 1.8 mm LSZH, 10 m, aqua	OM4	FFXLCLC42-MXM010

Fiber solutions

Fiber Patch Cord Configurator

Fiber connectivity



1	2	3	4	5	6	7	8	9	-	11	12	13	14	-	16
F	E	X	L	C	L	C	2	1	-	J	X	F	O	1	0

Prefix

1	FE	Jumper - riser
2	FF	Jumper - Dual rated LSZH/Riser

Connector 2

6	LC	LC standard
7	LA	LC angled
7	SC	SC standard
	SA	SC angled

Jacket color

	J	Yellow
11	M	Aqua
	N	Lime Green

Fiber type

	X	Multimode (OM4)
3	W	Singlemode
	V	Multimode (OM5)

Cordage size

8	2	1.6 mm simplex
	4	1.6 mm zipcord

Breakout length

12	X	No breakout
----	---	-------------

Connector 1

	LC	LC standard
4	LA	LC angled
5	SC	SC standard
	SA	SC angled

Fiber count

9	1	1 fiber
	2	2 fiber

Unit of measurement

13	F	Feet
	M	Meter

Length

14	2-999	Feet
-	1-999	Meters
16		

LC keyed fiber patchcords are also available as part of CommScope secure fiber solutions.

More information is available [here](#).

Note: OM5 jumpers are only available in LC to LC.

Pigtails for Adapter Packs



Prefix		
1	FA	Pigtail tight buffer
2	FB	Pigtail - Riser SBJ

Fiber type		
3	X	550 OM4 multimode
	W	Singlemode
	V	WB OM5

Connector 1		
4	LC	LC standard
	LA	LC angled
5	SC	SC standard
	SA	SC angled

Connector 2		
6	UC	Unconnectorized
7		

Cordage size		
8	0	0.9 mm (Tight buffered fiber)
	1	0.9 mm (Reinforced Buffered Fiber)

Fiber count		
9	1	1 fiber
	A	6 fiber pigtail kit BL-WH (1-6)
	B	6 fiber pigtail kit RD-AQ (7-12)
	C	12 fiber pigtail kit BL-AQ (1-12)

Jacket color		
11	A	Blue
	B	Orange
	C	Green
	D	Brown
	E	Slate
	G	Red
	H	Black
	J	Yellow
	K	Violet
	L	Rose
	M	Aqua
	N	Lime Green
	X	KIT pigtail

Breakout length		
12	X	No breakout

Unit of measurement		
13	F	Feet
	M	Meter

Length		
14	1-23	Feet
16	1-7	Meters

LC keyed fiber pigtails are also available as part of CommScope secure fiber solutions.

Method A MPO-12 preterminated trunk cables



- Available in OM4 or SM A2
- 12-fiber MPO connector-based modular design enables simple connections
- Factory terminated and tested trunk cables for instant field connections and guaranteed quality and performance
- Designed for administrative convenience—guaranteed transmit-to-receive connectivity
- Supports easy reconfiguration for moves, adds and changes
- Easy upgrade path to parallel transmission and associated applications, while preserving the initial investment

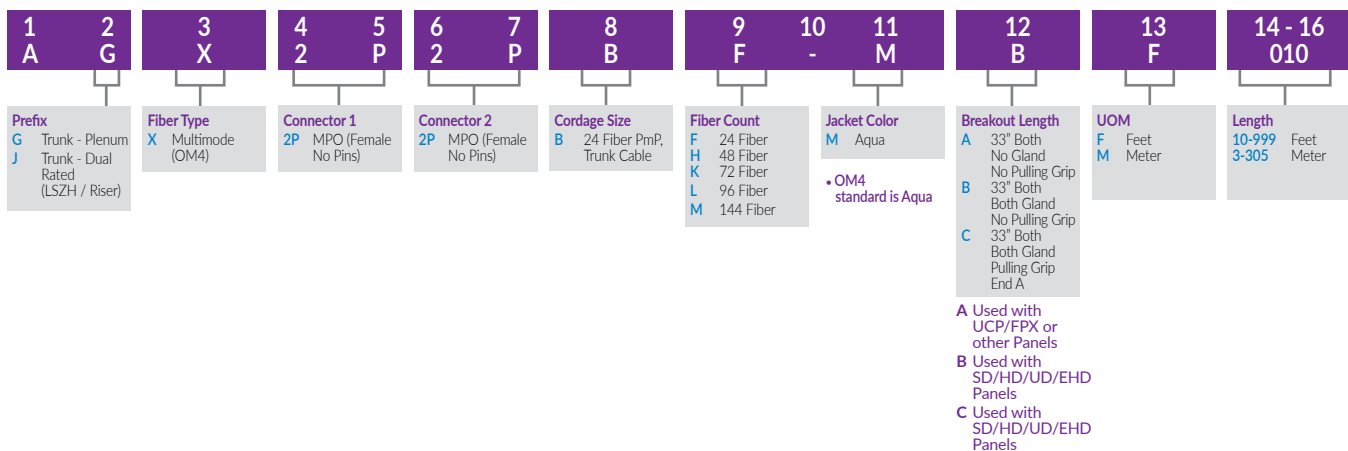
Preterminated trunk cables configurator

1 A	2 J	3 X	4 M	5 P	6 M	7 P	8 A	9 D	10 -	11 M	12 B	13 F	14 - 16 010
Prefix G Trunk - Plenum J Trunk - Dual Rated (LSZH / Riser) 3 Trunk-LSZH Class B2ca	Fiber Type G SM, G.657.A2 (8G Fiber) X Multimode (OM4)	Connector 1 MP MPO (Female No Pins) MX MPO (Male Pins)	Connector 2 MP MPO (Female No Pins) MX MPO (Male Pins)	Cordage Size A 12 Fiber PmP, Trunk Cable	Fiber Count D 12 Fiber F 24 Fiber G 36 Fiber H 48 Fiber K 72 Fiber L 96 Fiber M 144 Fiber	Jacket Color J Yellow M Aqua • Singlemode standard is Yellow • OM4 standard is Aqua	Breakout Length A 33" Both No Gland No Pulling Grip B 33" Both Both Gland No Pulling Grip C 33" Both Both Gland Pulling Grip End A	UOM F Feet M Meter	Length 10-999 Feet 3-305 Meter				
												A Used with UCP/FPX or other Panels	
												B Used with SD/HD/UD/EHD Panels	
												C Used with SD/HD/UD/EHD Panels	

Method A MPO-24 preterminated trunk cables

- Available in OM4
- 24-fiber MPO connector-based modular design enables simple connections
- Factory terminated and tested trunk cables for instant field connections and guaranteed quality and performance
- Designed for administrative convenience—guaranteed transmit-to-receive connectivity
- Supports easy reconfiguration for moves, adds and changes
- Easy upgrade path to parallel transmission and associated applications, while preserving the initial investment

Preterminated trunk cables configurator

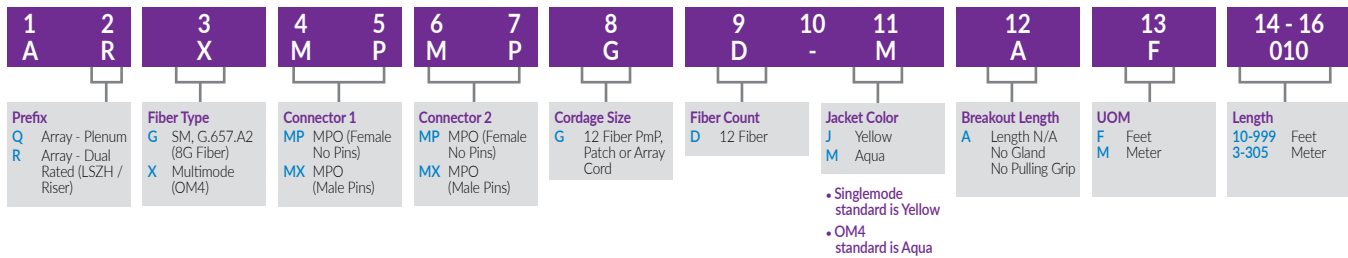


Method A MPO-12 array cables



- 12-fiber MPO connector-based modular design enables simple connections
- MPO Array cords are constructed with OM4 and SM A2 fibers
- Factory-terminated and tested for instant field connections and guaranteed quality and performance

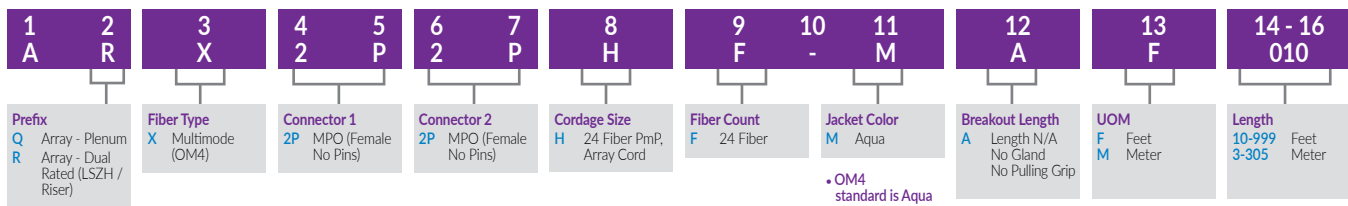
Array fanout cord configurator



Method A MPO-24 array cables

- 24-fiber MPO connector-based modular design enables simple connections
- MPO Array cords are constructed with OM4
- Factory-terminated and tested for instant field connections and guaranteed quality and performance

Array fanout cord configurator



Method B Preterminated trunk cables

- Available in OM5, OM4, OM3 and SM A1
- 12-fiber MPO connector-based modular design enables simple connections
- Factory terminated and tested trunk cables for instant field connections and guaranteed quality and performance
- Designed for administrative convenience—guaranteed transmit-to-receive connectivity
- Supports easy reconfiguration for moves, adds and changes
- Easy upgrade path to parallel transmission and associated applications, while preserving the initial investment



Preterminated trunk cables configurator

1 F	2 G	3 X	4 M	5 P	6 M	7 P	8 A	9 D	10 -	11 M	12 B	13 F	14 - 16 010
Prefix FJ Trunk-LSZH FG Trunk-Plenum F3 Trunk-LSZH CPR Class B2ca	Fiber Type X Multimode (OM4) Z Multimode (OM3) W Singlemode (G657A1) V Multimode (OM5)	Connector 1 MP MPO (Female No Pins)	Connector 2 MP MPO (Female No Pins) MX MPO (Male Pins)	Cordage Size A 12 Fiber PmP Cable D 12 Fiber PmP I/O Cable	Fiber Count D 12 Fiber** F 24 Fiber G 36 Fiber H 48 Fiber K 72 Fiber L 96 Fiber M 144 Fiber	Jacket Color J Yellow M Aqua N Lime	Breakout Length A No Gland B With Gland C Pulling Grip	UOM F Feet M Meter	Length 10-999 Feet 3-999 Meter	<ul style="list-style-type: none"> • Singlemode standard is Yellow • OM3 and OM4 standard is Aqua • OM5 standard is Lime 			

Method B Ruggedized fanout cables

- 12-fiber MPO connector-based modular design enables simple connections
- Ruggedized fanouts are constructed with OM3/OM4 and OM5 fibers
- Factory terminated and tested for instant field connections and guaranteed quality and performance
- Designed for administrative convenience—guaranteed transmit-to-receive connectivity
- No special or non-standard polarity components



Ruggedized fanout configurator

1 F	2 L	3 X	4 M	5 P	6 L	7 C	8 A	9 D	10 -	11 M	12 E	13 F	14 - 16 010
Prefix FN Rugged F/O LSZH FL Rugged F/O Plenum F4 Rugged F/O - LSZH CPR Class B2ca	Fiber Type X Multimode (OM4) Z Multimode (OM3) W Singlemode (G657A1) V Multimode OM5	Connector 1 MP MPO (Female No Pins) MX MPO (Male Pins)	Connector 2 LA LC Angled LC LC Standard SA SC Angled SC SC Standard	Cordage Size A 12 Fiber PmP Cable D 12 Fiber PmP I/O Cable	Fiber Count D 12 Fiber F 24 Fiber G 36 Fiber H 48 Fiber K 72 Fiber	Jacket Color A Blue J Yellow M Aqua N Lime	Breakout Length A No Gland E 24 in Breakout No Gland F 24 in Breakout With Gland G 24 in Breakout Pulling Grip H 48 in Breakout No Gland J 48 in Breakout With Gland K 48 in Breakout Pulling Grip L 72 in Breakout No Gland M 72 in Breakout With Gland N 72 in Breakout Pulling Grip P 96 in Breakout No Gland Q 96 in Breakout With Gland R 96 in Breakout Pulling Grip S 36 in Breakout No Gland T 36 in Breakout Pulling Grip U 36 in Breakout With Gland	UOM F Feet M Meter	Breakout Length 24 in 7-999 ft 48 in 9-999 ft 72 in 11-999 ft 96 in 13-999 ft 24 in 2-999 ft 48 in 3-999 ft 72-96 in 4-999 ft	<ul style="list-style-type: none"> • Singlemode standard is Yellow • OM3 and OM4 standard is Aqua • OM5 standard is Lime 			

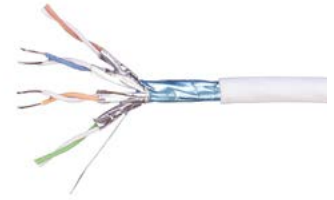
Method B Array cords

- 12-fiber MPO connector-based modular design enables simple connections
- Array cords are constructed with OM3/OM4 and OM5 fibers
- Factory-terminated and tested for instant field connections and guaranteed quality and performance
- No special or non-standard polarity components
- MPO-LC/SC/ST array fanouts are constructed with 1.6 mm reinforced zipcord furcation tubing for outstanding durability and dependability
- Array fanout assemblies are available in fanout length of 48" for cables over 10 feet; Cables 3-9 feet, 24 inch fanout; Cables 2 feet, 12 inch fanout



Array fanout cord configurator

1	2	3	4	5	6	7	8	9	10	11	12	13	14 - 16
F	Q	X	M	P	L	C	G	D	-	M	E	F	010
Prefix FR Array LSZH FQ Array Plenum		Fiber Type X Multimode (OM4) Z Multimode (OM3) W Singlemode (G657A1) V Multimode (OM5)	Connector 1 MP MPO (Female No Pins) MX MPO (Male Pins)		Connector 2 LC LC Connector SC SC Standard		Cordage Size G 12 Fiber PmP Array Cord	Fiber Count D 12 Fiber		Jacket Color J Yellow M Aqua N Lime • Singlemode standard is Yellow • OM3 and OM4 standard is Aqua • OM5 standard is Lime	Breakout Length D 12 in Breakout No Gland E 24 in Breakout No Gland H 48 in Breakout No Gland L 72 in Breakout No Gland P 96 in Breakout No Gland	UOM F Feet M Meter	Breakout Length 12 in 2-999 ft 24 in 4-999 ft 48 in 6-999 ft 72 in 8-999 ft 96 in 10-999 ft 24 in 1-999 m 48 in 2-999 m 72 in 3-999 m 96 in 4-999 m



Category	Material ID	Description	Color	Euroclass	Package
Category 6A, Category 7 and Category 7A shielded cables					
6A	884041954/16	CS44Z3 WHT C6A 4/23 F/FTP RL 500M	White	Dca	500m reel
6A	884035958/16	CS44ZC WHT C6A 4/23 F/FTP RL 500M	White	Cca	500m reel
6A	884048458/16	CS44ZB WHT C6A 4/23 F/FTP RL 500M	White	B2ca	500m reel
7	1711163-1	Category 7 F/FTP LSZH 23AWG	White	Dca	500m reel
7	884016558/16	CS54ZC WHT C7 4/23 F/FTP RL 500M	White	Cca	500m reel
7	884046258/16	CS54ZB WHT C7 4/23 F/FTP RL 500M	White	B2ca	500m reel
7A	1711910-1	Category 7A S/FTP LSZH 23AWG	White	Dca	500m reel
7A	884025858/16	CS67ZC WHT C7A 4/22 S/FTP RL 500M	White	Cca	500m reel
7A	884049058/16	CS67ZB WHT C7A 4/22 S/FTP RL 500M	White	B2ca	500m reel



Material ID	Product Code	Description	Rack Units	Ports
Category 6A modular shielded panels (Jacks not included)				
760237050	CPPR-SDDM- SL-1U-24	CommScope Recessed Angled Discrete Distribution Module Panel, SL, STP, 1U, 24 port	1	24
760237046	CPP-SDDM-SL-1U-24	CommScope Discrete Distribution Module Panel, SL, STP, 1U, 24 port	1	24



Material ID	Product Code	Description
Category 6A shielded jacks		
2153449-4	AMP-TWIST SLX, 6S,GY	AMP-TWIST SLX Series Modular Jack, category 6A, shielded , 4 Pair, without dust cover, gray
2153365-4	AMP-TWIST SLX, 6AS W/DC,GY	AMP-TWIST SLX Series Modular Jack, category 6A, shielded , 4 Pair, with dust cover, gray



Material ID	Description
Modular jack termination tool	
1725150-6	Modular Jack Termination SL Tool Kit with Lacing Fixture



Material ID	Description	Color	Euroclass	Package
Category 6A U/UTP copper cables				
884036114/10	CS44Z3 WHT C6A 4/23 U/UTP CPK 305M	White	Dca	CommPak box
884030814/10	CS44ZC WHT C6A 4/23 U/UTP CPK 305M	White	Cca	CommPak box
884027214/10	CS44ZB WHT C6A 4/23 U/UTP CPK 305M	White	B2ca	CommPak box
884028714/10	CS44Z3 BLU C6A 4/23 U/UTP CPK 305M	Blue	Dca	CommPak box
884044014/10	CS44ZC BLU C6A 4/23 U/UTP CPK 305M	Blue	Cca	CommPak box
884049714/10	CS44ZB BLU C6A 4/23 U/UTP CPK 305M	Blue	B2ca	CommPak box

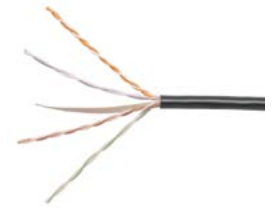
Material ID	Description	CRP Rating	Ports
Category 6A modular unshielded panels (jacks not included)			
760237040	CommScope Discrete Distribution Module Panel, SL, UTP, 1U	Dca	24 port
760237041	CommScope Discrete Distribution Module Panel, SL, UTP, 2U	Cca	48 port
760237044	CommScope Recessed Angled Discrete Distribution Module Panel, SL, UTP, 1U	B2ca	24 port



Material ID	Description	CRP Rating
Category 6A UTP jacks – SL Opening (without dustcover)		
760241185	SL10G SL110 jack, Category 6A, unshielded, without dust cover, black	Dca
760241194	SL10G SL110 jack, Category 6A, unshielded, without dust cover, alpine white	Cca
760241188	SL10G SL110 jack, Category 6A, unshielded, without dust cover, blue	B2ca

Category 6 U/UTP products

Material ID	Description	Color	Euroclass	Package
Category 6 U/UTP cables				
884032314/10	CS34Z3 WHT C6 4/24 U/UTP CPK 305M	White	Dca	CommPak box
884016214/10	CS34ZC WHT C6 4/23 U/UTP CPK 305M	White	Cca	CommPak box
884015714/10	CS34ZB WHT C6 4/23 U/UTP CPK 305M	White	B2ca	CommPak box
884044214/10	CS34Z3 WHT C6 4/23 U/UTP CPK 305M	White	Dca	CommPak box
884023914/10	CS34Z3 BLU C6 4/24 U/UTP CPK 305M	Blue	Dca	CommPak box
884043014/10	CS34ZC BLU C6 4/23 U/UTP CPK 305M	Blue	Cca	CommPak box
884043104/10	CS34ZB BLU C6 4/23 U/UTP RL 305M	Blue	B2ca	Reel 305m
884029214/10	CS34Z3 ORG C6 4/24 U/UTP CPK 305M	Orange	Dca	CommPak box
884040614/10	CS34ZC ORG C6 4/23 U/UTP CPK 305M	Orange	Cca	CommPak box



Material ID	Description	Rack units	Ports
Category 6 modular unshielded panels (Jacks not included)			
760237040	CommScope Discrete Distribution Module Panel, SL, UTP, 1U, 24 port	1	24
760237041	CommScope Discrete Distribution Module Panel, SL, UTP, 2U, 48 port	2	48
760237044	CommScope Recessed Angled Discrete Distribution Module Panel, SL, UTP, 1U, 24 port	1	24



Material ID	Description	Color
Category 6 UTP jacks – SL Opening (without dust cover)		
1375055-2	Category 6 UTP jack, SL, without dust cover	Black
1375055-3	Category 6 UTP jack, SL, without dust cover	White
1375055-6	Category 6 UTP jack, SL, without dust cover	Blue



Material ID	Description	Rating	Color	Length
Category 6 U/UTP patch cords - LSZH				
NPC06UZDB-WT001M	PC RJ45 Category 6 U/UTP LSZH stranded	LSZH	White	1 meter
NPC06UZDB-WT002M	PC RJ45 Category 6 U/UTP LSZH stranded	LSZH	White	2 meter
NPC06UZDB-WT003M	PC RJ45 Category 6 U/UTP LSZH stranded	LSZH	White	3 meter
NPC06UZDB-GY001M	PC RJ45 Category 6 U/UTP LSZH stranded	LSZH	Gray	1 meter
NPC06UZDB-GY002M	PC RJ45 Category 6 U/UTP LSZH stranded	LSZH	Gray	2 meter
NPC06UZDB-GY003M	PC RJ45 Category 6 U/UTP LSZH stranded	LSZH	Gray	3 meter
NPC06UZDB-BL001M	PC RJ45 Category 6 U/UTP LSZH stranded	LSZH	Blue	1 meter
NPC06UZDB-BL002M	PC RJ45 Category 6 U/UTP LSZH stranded	LSZH	Blue	2 meter
NPC06UZDB-BL003M	PC RJ45 Category 6 U/UTP LSZH stranded	LSZH	Blue	3 meter



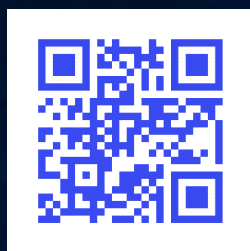
Material ID	Description	Color
Horizontal Cable Management		
760038240	1U Patch Cord Management	Black



Material ID	Description	Color
Surface mount boxes		
1-1933671-3	Surface Mount Module, 4 port	Alpine white
1-1933668-3	Surface Mount Module, 2 port	Alpine white
1933671-2	Surface Mount Module, 4 port	Black
1933668-2	Surface Mount Module, 2 port	Black



FABRICATION & DISTRIBUTION
CUIVRE | OPTIQUE | VDI | RESEAU



www.fcsgroup.fr

**Pour toutes études
de vos projets
contactez-nous**

01.30.79.94.20

COMMSCOPE®



L'Expert du Câblage

8, rue Abel Gance - 78390 Bois d'Arcy
info@fcsgroup.fr - www.fcsgroup.fr